

# 燃气连续自动配气系统

## Gas Continuing Automatic Mixing and Distribution System



实用新型专利、天津市科学技术进步三等奖

Utility Model Patent, The Third Prize of Scientific and Technological Progress of Tianjin

### 1. 产品名称：燃气连续自动配气系统

Product Name: Gas Continuing Automatic Mixing and Distribution System



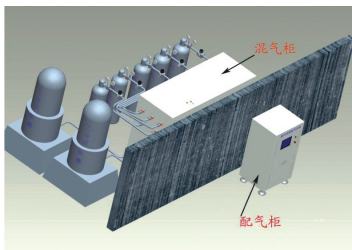
燃气连续自动配气系统  
Gas Continuing Automatic Mixing and Distribution System

**2. 用途：**根据标准GB/T13611-2006《城市燃气分类》设计开发，通过自动控制原料气比例实现连续配置所需燃气  
Application: Designed and developed in accordance with the standard GB/T13611-2006 City Gas Classification, it realizes gas required for continuing configuration through automatic control of feed gas proportion

### 3. 主要功能和特点：

#### Functions and Specifications

- 气多路自动连续配气，可设置多达99组配气参数  
Multi-pass auto continuing distribution of gas, a maximum of 99 groups of distribution parameters
- 按要求可随时计算、查看和修改配气比  
Calculation, view and modification of distribution ratio can be achieved as required
- 自动流量控制、配气精度高，稳定性好  
Auto flow control, high distribution accuracy, excellent stability
- 采用隔离、隔爆、增压密闭设计，安全性能高  
Isolating, flame-proof and pressurizing closure design, high safety performance
- 系统闭环设计，可在线自动调节配气量，控制界面实现手动自动切换  
System closed-loop design, online auto adjustment of distributed gas volume, manual/auto switching through interface control
- 提供配气、温度、压力、瞬间流量、累计流量等状态的实时画面，记录配气状态  
Providing real-time interface of distributed gas, temperature, pressure, instantaneous flow and accumulated flow, and recording distribution status
- 可配置打印输出或存储作为永久资料保存（选购）  
Printing outputs or storages to save permanent materials (optional)
- 可配置色谱仪实现在线色谱分析  
Chromatographs configured to realize online chromatogram analysis

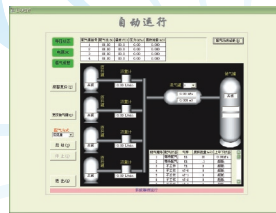


五进两出现场布局图  
Field Layout of Five Inlets and Two Outlets

### 4. 主要技术参数

#### Technical Data

系统配气精度 System distribution accuracy	≤ ±2% (原料气成分稳定、储气罐以湿式罐为前提) ≤ ±2% (stable element of feed gas, gas storage tank based on wet tank)
流量控制精度 Flow control accuracy	≤ ±0.3% ≤ ±0.3%
压力、流量响应时间 Pressure and flow response time	≤ 1.0秒 ≤ 1.0s
压力测量精度 Pressure measurement accuracy	≤ ±0.5%F.S. ≤ ±0.5%F.S.
温度测量精度 Temperature measurement accuracy	≤ ±1℃ ≤ ±1℃
流量测量精度 Flow Testing Accuracy	≤ ±1.0% ≤ ±1.0%
系统设计裕度 System design allowance	耐压能力>250% 流量过载能力>150% Withstanding pressure > 250%, Flow overload ability > 150%
配气出口压力 Distribution outlet pressure	2kPa-10kPa (可根据现场要求用户设定) 2kPa-10kPa (depending on customer requirements)
配气量标称值单位 Distribution volume nominal value unit	m³/h或L/min m³/h or L/min
压缩空气气源要求 Compressed air source requirement	0.4MPa-0.8MPa 流量>80L/min 0.4MPa-0.8MPa flow>80L/min
工作环境温度 Ambient temperature	0-40℃ 0-40℃



操作界面  
Operating Interface

### 5. 型号选择

#### Model selection

FLP-①-②-③-④

#### ① 流量选择

Flow selection

记号 Marking	含义 Meaning
12	12m³
30	30m³

#### ② 进气路数选择

Selection of inlets

记号 Marking	含义 Meaning
3	3路进气 3 inlets
4	4路进气 4 inlets
5	5路进气 5 inlets
6	6路进气 6 inlets
7	7路进气 7 inlets

#### ③ 出气路数选择

Selection of outlets

记号 Marking	含义 Meaning
1	1路出气 1 outlets
2	2路出气 2 outlets
3	3路出气 3 outlets
4	4路出气 4 outlets
5	5路出气 5 outlets

#### ④ 可选产品

Optional products

记号 Marking	含义 Meaning
无记号 No Marking	无 No
P	打印机 Printer
C	色谱分析仪 Chromatographic analyzer