

摩托车燃油蒸发排放测试系统

Motorcycle Fuel Evaporative Emission Testing System

1. 产品名称：摩托车燃油蒸发排放测试系统
Product Name: Motorcycle fuel evaporative emission Testing system



摩托车燃油蒸发排放测试系统
Product Name: Motorcycle fuel evaporative emission Testing system

4. 主要功能和特点:

Functions and Specifications:

- 可单独，也可连续进行气密性、通气性、脱附性连续测试
It has leak, venting, desorption continually test function as well as separately test
- “在线/国标”测试参数独立设定，并可迅速切换
“Online/National Standard” testing data is set separately, can be switched rapidly
- 工控机管理、保存测试数据
IPC management, save testing data
- 通过换装夹具可适用多种车型的检测
Apply to test various vehicle models through change jigs

5. 核心器件:

Main Instruments:

FL-800气密检漏仪，层流流量计，精密压力调节系统，微压传感器
FL-800 Air Leak Tester, laminar flow meter, pressure regulation system, Micro-pressure sensor

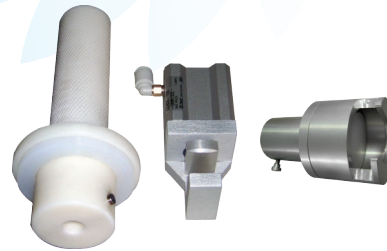
6. 测试节拍

Testing Rate:

少于80秒（气密+通气+脱附，不含辅助时间）Less than 80s (leak + venting + desorption, do not include delay time)

2. 用途：为保证达到《摩托车和轻便摩托车燃油蒸发污染物排放限值及测量方法》(GB20998-2007)及生产一致性要求，对摩托车燃油系统进行密封性、通气性试验以及脱附性试验

Application: for meeting requirements of <Limits and measurement methods for evaporative pollutants from motorcycles and mopeds> (GB20998-2007) and production consistency. It use for leak, aeration, and desorption test of motorcycles fuel system



自动封堵
Automatic plugging

3. 型号选择

Model selection

M R Y	—	0	1	2	UL	—	—	×	×	×	×	×
		①					②					③

①测试类型 Testing Method	1	经济型（气密国标在线 通气国标在线 脱附国标 手动调压） Economy Model(National Standard Leak Test Online/National Standard Ventilation Test Online/ National Standard Desorption Test /Manual Pressure Adjustment)
	2	标准型（气密国标在线 通气国标在线 脱附国标在线 手动调压） Standard Model(National Standard Leak Test Online/National Standard Ventilation Test Online/ National Standard Desorption Test Online/Manual Pressure Adjustment)
	3	自动型（气密国标在线 通气国标在线 脱附国标在线 自动调压） Standard Model(National Standard Leak Test Online/National Standard Ventilation Test Online/ National Standard Desorption Test Online/Automatic Pressure Adjustment)

②封堵口形式 Plugging Method	1	手动封堵 Manual Plug
	2	自动封堵（螺纹口） Auto Plug(Screw thread)
	3	自动封堵（卡口） Auto Plug(Chuck)

③吊装方式 Lifting Method	0	无吊装 None
	1	无动力单轨道吊装 Gravity Single Track
	2	无动力双轨道吊装 Gravity Double Tracks

