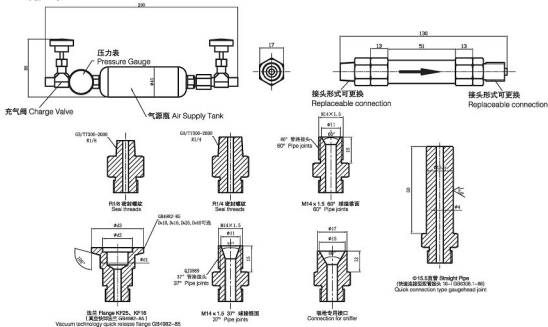


漏率 Leakrate Pa.m³/s						
一次侧压力(Pa)(G) Primary Side Pressure	二次侧压力(MPa)(G) Secondary Side Pressure	10 ⁻⁴ 量级 10 ⁻⁴ Magnitude	10 ⁻⁵ 量级 10 ⁻⁵ Magnitude	10 ⁻⁶ 量级 10 ⁻⁶ Magnitude	10 ⁻⁷ 量级 10 ⁻⁷ Magnitude	10 ⁻⁸ 量级 10 ⁻⁸ Magnitude
0	-100	√	√	√	√	√
100	0	X	√	√	√	√
200	0	X	√	√	√	√
300	0	X	X	√	√	√
400	0	X	X	√	√	√
500	0	X	X	√	√	√
600	0	X	X	√	√	√
700	0	X	X	√	√	√
800	0	X	X	√	√	√
900	0	X	X	√	√	√
1000	0	X	X	√	√	√
2000	0	X	X	X	√	√
适用气体 Applied Gas	氦气 Helium Only	全部 All	全部 All	全部 All	全部 All	全部 All

外形尺寸 Dimensions

单位 Unit: mm



主要产品 ● 气密检测仪 ● 数字压力表 ● 流量计 ● 自动压力、流量控制器 ● 密封性能检测专用设备

博益(天津)气动技术研究有限公司 BOYI (Tianjin) Pneumatic Technology Institute Co., Ltd.

公司/工厂: 天津经济技术开发区第九大街80号(华丰工业园7号)厂
 区(300457)
 电话: (86)22-59810966 传真: (86)22-59810963
 邮箱: sales@boyi.cn
 网址: www.boyi.cn

北京营销中心: 北京丰台区奥门18号名悦未来大厦801-805(100068)
 电话: (86)10-87582461 传真: (86)10-87585462

广州办事处: 广州市天河区体育东路122号半塘国际商务中心西座
 2115-2114室 (510620)
 电话: (86)20-38870513 传真: (86)20-38870733

杭州办事处: 杭州市滨江区71-579号金泰商务大厦905室 (310002)
 电话: (86)571-87850014 传真: (86)571-87850281

重庆办事处: 重庆市江北区建新东路何国鼎11号楼15-9 (400024)
 电话: (86)23-68582856 传真: (86) 23-68585616

武汉办事处: 武汉市洪山区珞珈路205号南区5-3-401 (430070)
 电话: (86)27-87156659 传真: (86)27-87156657

上海办事处: 上海浦东新区凌空路58号东方国际新科技术
 22层办公室 (200122)
 电话: (86)21-68406123 传真: (86) 21-68406266

苏州办事处: 江苏省苏州市高新区滨河路1156号金源大厦2183
 (215011)
 电话: (86)512-65579173 传真: (86)512-65579073

西安办事处: 西安市太北路124号星印象A座1单元703室 (710082)
 电话: (86)29-84589121 传真: (86)29-84589121

沈阳办事处: 沈阳市铁西区建设东路11-2号铭德楼1-13-5(110021)
 电话: (86)24-23527120 传真: (86) 024-23527320

标准漏孔
Standard Leak

FFM-1000-2000 系列
Series



- 响应速度快, 无需等待时间
- 受外界温度变化影响小
- 全金属结构, 耐高压、耐冲击
- 可填充多种气体, 应用范围广
- 调整压力可获得不同漏率





- Fast response without waiting time
- Small ambient temperature affect
- Metal structure with high pressure resistance and impact resistance
- Varied filling gas available with wide applied range
- Different leakage rates obtained through pressure adjustment

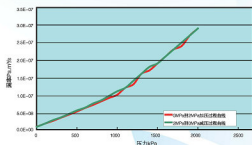


20MPa超高压, $10^{-4} \sim 10^{-9} \text{ Pa}\cdot\text{m}^3/\text{s}$ 漏率对应实际生产要求

Ultra-high pressure of 20MPa and leak rate of $10^{-4} \sim 10^{-9} \text{ Pa}\cdot\text{m}^3/\text{s}$ meet the actual production requirements

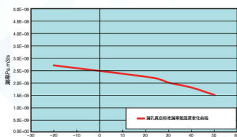
无源漏孔 standard leak without air source	有源漏孔 standard leak with air source
FFM-1000系列 Series 	FFM-2000系列 Series 
一般使用压力-0.1~2.0MPa (G) Ordinary Working Pressure-0.1~2.0MPa (G)	灌装压力-0.1~1.0MPa (G) Filling Pressure -0.1~1.0MPa (G)
可直接嵌入被测物, 组成标准泄漏的基准物; 可直接安装在测试台上; 可接气源, 或者直接喷射吹气; Can be directly embedded in the measured work to be part of the master; Can be directly installed in the test cabinet; Can be connected to the air supply, or receive blowing gas	自带气源, 可填充各种气体; 填充气体压力可调; 通过调整压力, 可获得不同漏率; 可放入测试台中, 模拟被测物泄漏; Be equipped with air source with varied gas available; Filling gas pressure adjustable; Different leakage rates obtained through pressure adjustment Simulate the leakage of measured work when put in the test cabinet

压力-漏率曲线 Pressure-Leak Rate Curve



反复加压重复性好。

温度曲线 Temperature Curve

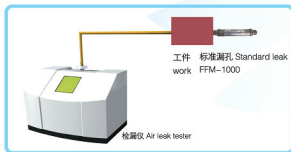


温度特性好, 湿度变化对漏率影响小。

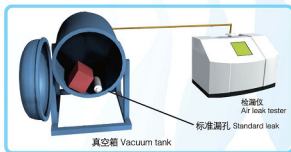
Excellent temperature characteristic ensures little effect on the leakage caused by temperature variation.

应用举例 Application examples

1. 标准漏孔可与检测仪连接, 用于校正检测仪。还可用于检测检测仪的最小可检漏率。
The standard leak can be connected to the air leak tester, in order to regulate the tester or confirm the minimum detectable leak rate.



2. 可将标准漏孔连接工件或同工件一起放入真空箱内, 用于制定良品/次品的泄漏标准, 以及日常维护检测仪的使用。
The standard leak can be connected to the measured work, or put together with the measured work in the vacuum tank, in order to confirm the judgment standard of good product and defective product, or for the daily maintenance.



产品选型 Model Selection

FFM-000 (规格: 压力) (Specification: Pressure)

型号Model: ① ② ③ ④ ⑤ ⑥ ⑦

① 类型 Type: 1 无源型 Without air source, 2 有源型 With air source

② 接口形式 Connection: 1 法兰 KF16 Flange KF16, 2 法兰 KF25 Flange KF25, 3 M14×1.5 3/8" 球接锥管 3/8" Pipe joints (QJ2889), 4 M14×1.5 6/8" 球接锥管 6/8" Pipe joints (QJ2889), 5 R1/8, 6 R1/4, 7 φ15.5直管 φ15.5 Straight Pipe, 8 磨枪专用接口 Special counterbore for sniffer, X 其它 Other

③ 压力类型 Pressure Type: V 真空标准漏孔 Vacuum pressure standard leak, P 正压标准漏孔 Positive pressure standard leak

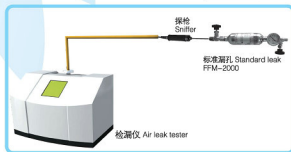
④ 气体类型 Gas Type: A 空气 Air, E 氦气 Helium, H 氢气(9%氦气+90%氢气) Hydrogen (9%He+90%H₂), N 氮气 Nitrogen

⑤ 漏率等级 Pa·m³/s Leak Rate Level: A 1×10⁻⁹~5×10⁻⁸, B 6×10⁻⁹~9×10⁻⁸, C 1×10⁻⁸~5×10⁻⁷, D 6×10⁻⁸~9×10⁻⁷, E 1×10⁻⁷~5×10⁻⁶, F 6×10⁻⁷~9×10⁻⁶, G 1×10⁻⁶~5×10⁻⁵, H 6×10⁻⁶~9×10⁻⁵, I 1×10⁻⁵~5×10⁻⁴, J 6×10⁻⁵~9×10⁻⁴, K 1×10⁻⁴~5×10⁻³, L 6×10⁻⁴~9×10⁻³, X 其它等级, 标准规格 Other leak rate level. Please specify separately

⑥ 随机资料 Delivery Attached Documentation: C 中文 Chinese, E 英文 English, J 日文 Japanese

⑦ 证书 Certificates: N 标准漏孔资料 Standard, X 其他指定证书, 请单独指定 Required! (Please specify the desired documents separately)

■ 漏孔打刻材料请标注型号、压力、规格资料名称: 合格证、说明书、检查合格证。
-0.1~2.0 MPa 为标准品, 2.0MPa~20MPa需要打刻。
■ Please specify the model and pressure range when ordering.
Delivery Attached Documentation includes certification, operation manual and test report.
Standard type: -0.1~2.0 MPa
Customized type: 2.0 MPa ~ 20 MPa



3. 用于嗅探法
Sniffer Method